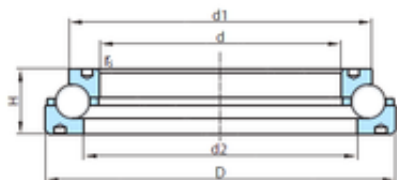




## NTN Bearing Driveshaft do Brasil

PSL PSL 212-312 angular contact ball bearings



Bearing No. PSL 212-312

Size	482.6x622.3x77.47 mm
Bore Diameter	482,6 mm
Outer Diameter	622,3 mm
Width	77,47 mm
d	482,6 mm
D	622,3 mm
H	77,47 mm
d1	545,465 mm
d2	555,625 mm
r	6,35 mm
Weight	37,5 Kg
Basic dynamic load rating (C)	406 kN

PSL 212-312 Bearing 2D drawings and 3D CAD models